



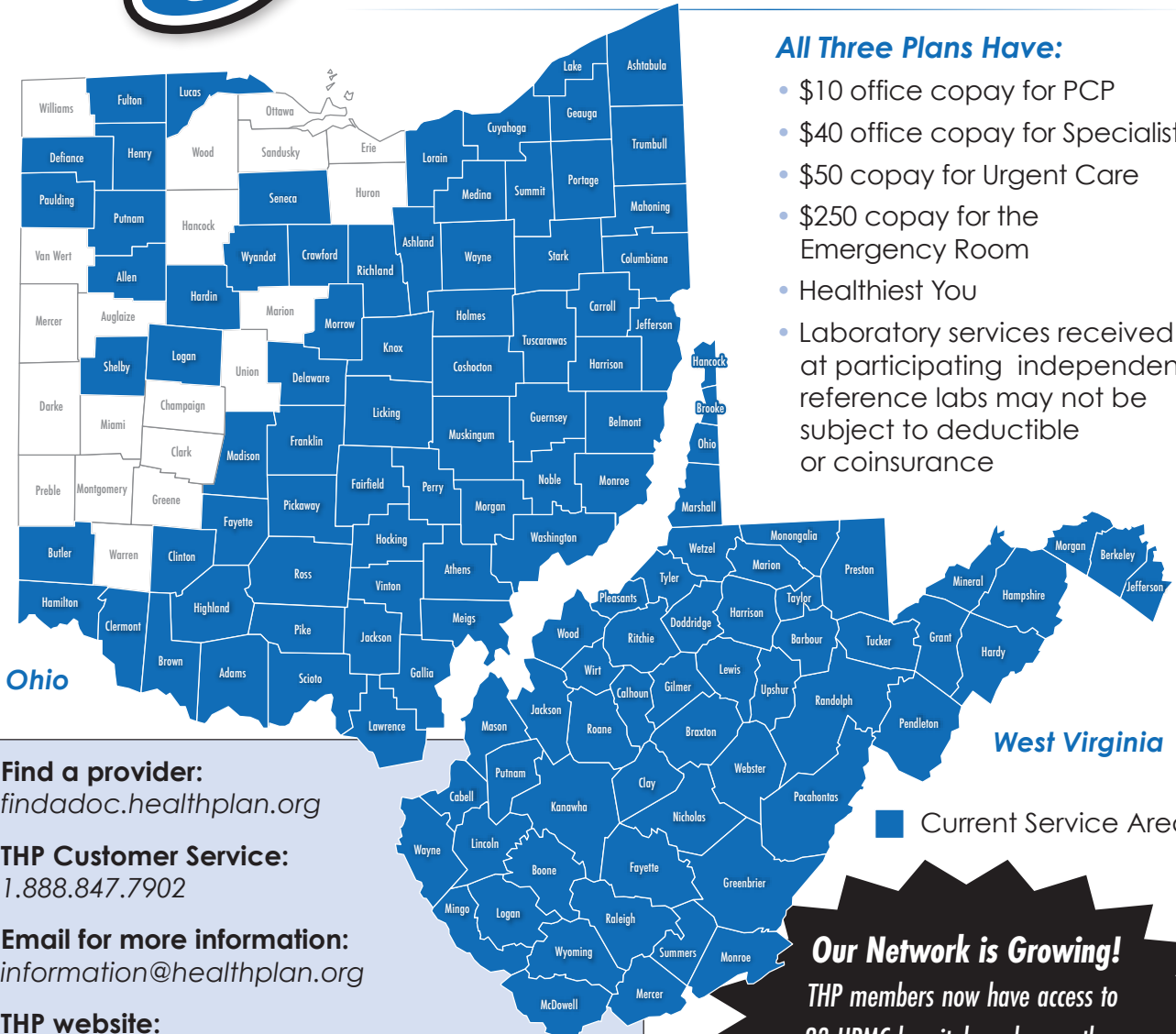
**OUR ROOTS
RUN DEEP**

Offers **3** Benefit Plans for Public Employees

HMO Plan A • HMO Plan B • Point of Service Plan C

All Three Plans Have:

- \$10 office copay for PCP
- \$40 office copay for Specialist
- \$50 copay for Urgent Care
- \$250 copay for the Emergency Room
- Healthiest You
- Laboratory services received at participating independent reference labs may not be subject to deductible or coinsurance



Find a provider:
findadoc.healthplan.org

THP Customer Service:
1.888.847.7902

Email for more information:
information@healthplan.org

THP website:
healthplan.org

How to enroll:
peia.wv.gov and click on Manage My Benefits

Our Network is Growing!
THP members now have access to 23 UPMC hospitals and more than 7,000 UPMC affiliated providers.

Plan Year 2027 – Open Enrollment for active employees and non-Medicare retirees will be April 2 – May 15.